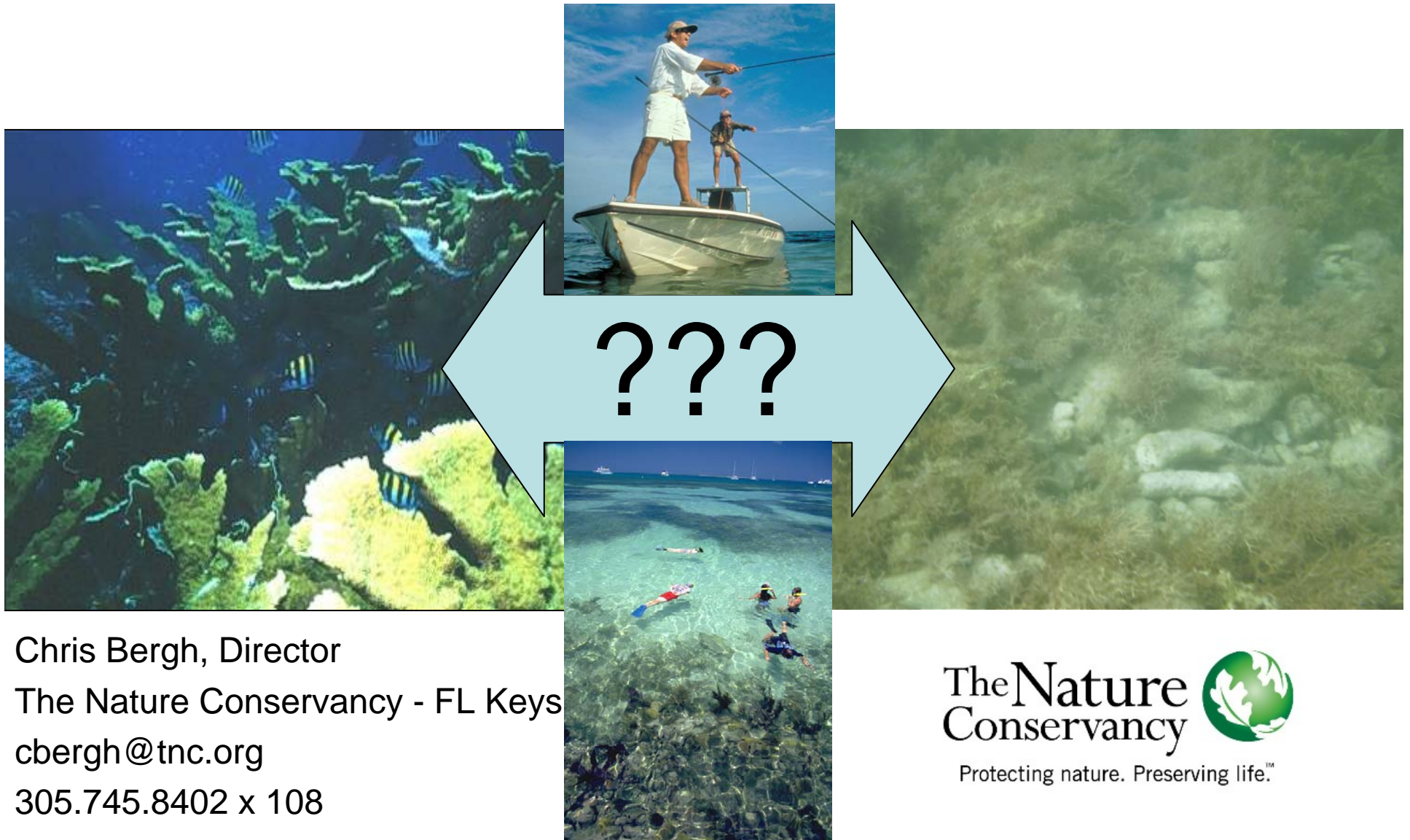


# Introduction to the Florida Reef Resilience Program



Chris Bergh, Director  
The Nature Conservancy - FL Keys  
cbergh@tnc.org  
305.745.8402 x 108

The Nature  
Conservancy   
Protecting nature. Preserving life.™

MEMORANDUM OF AGREEMENT

BETWEEN THE

U.S. DEPARTMENT OF COMMERCE  
NATIONAL OCEANIC AND ATMOSPHERIC ADMINISTRATION  
NATIONAL OCEAN SERVICE

AND THE

STATE OF FLORIDA  
DEPARTMENT OF ENVIRONMENTAL PROTECTION

AND THE

GREAT BARRIER REEF MARINE PARK AUTHORITY  
AUSTRALIA

NOS Agreement Code: MOA-2004-161/1252



**Australian Government**

**Great Barrier Reef  
Marine Park Authority**

The purpose of this Agreement is to establish a partnership between the Parties that will benefit the FKNMS and GBRMPA marine protected areas to better facilitate the exchange of information between the organizations and within their respective regions. We agree to partner in our efforts to achieve a shared goal of improving coral reef resilience to ensure the long-term sustainability of coral reefs. We share many of the same challenges in managing and studying barrier coral reef environments.

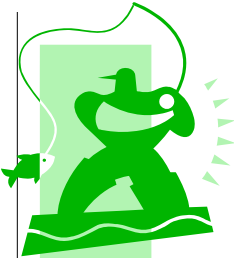
MEMORANDUM OF AGREEMENT



THE  
OF COMMERCE  
SPHERIC ADMINISTRATION  
NATIONAL OCEAN SERVICE



Southeast  
Florida ON  
Coral Reef



ST  
NT OF  
Acti  
RIER REEF M  
AUSTI

The Nature  
Conservancy



Protecting nature. Preserving life.™



Australian Government  
Great Barrier Reef  
Marine Park Authority



The purpose of this Agreement is to establish a partnership between the Parties that will benefit the FKNMS and GBRMPA mari



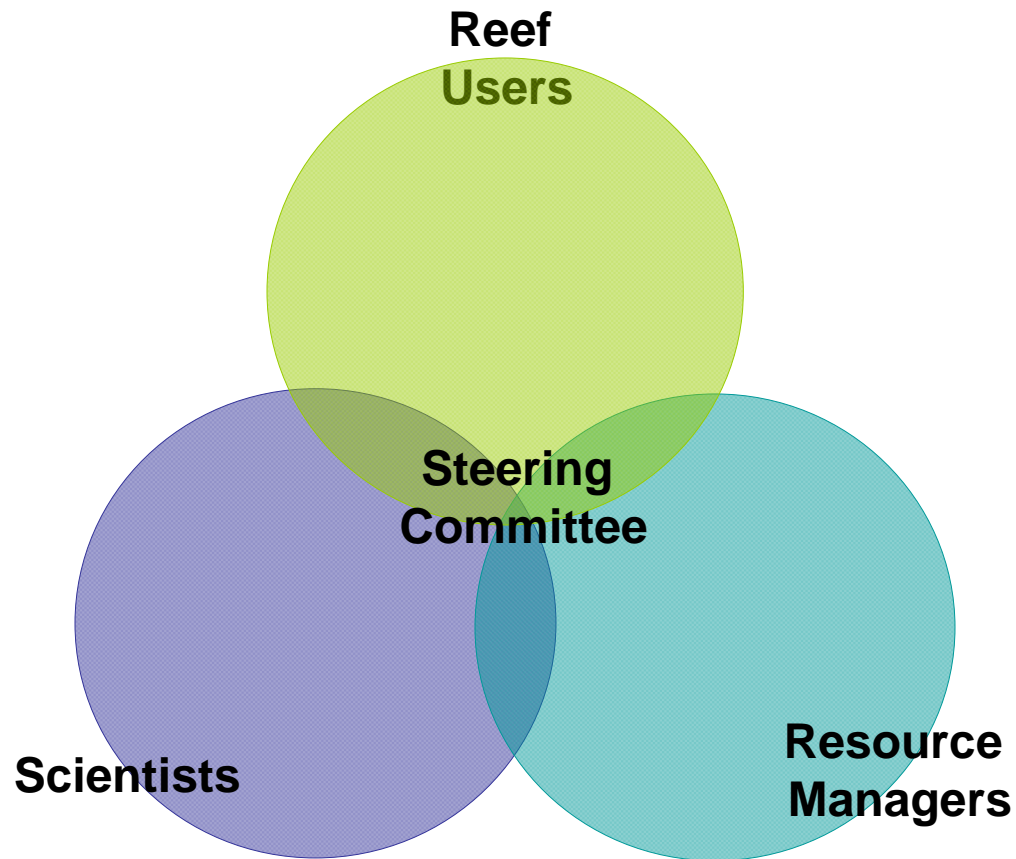
org  
s to  
m sustainability of coral reefs. We share  
and studying barrier coral reef



Florida Institute of Technology

High Tech with a Human Touch

The Florida Reef Resilience Program  
provides a venue for different interests  
to come together



# The Florida Reef Resilience Program Steering Committee



**Australian Government**  
**Great Barrier Reef  
Marine Park Authority**



**The Nature  
Conservancy**



Protecting nature. Preserving life.™



**MOTE**  
MARINE LABORATORY



**USF** UNIVERSITY OF  
SOUTH FLORIDA  
COLLEGE OF MARINE SCIENCE



# The FRRP spans the reefs from the Dry Tortugas to St. Lucie Inlet



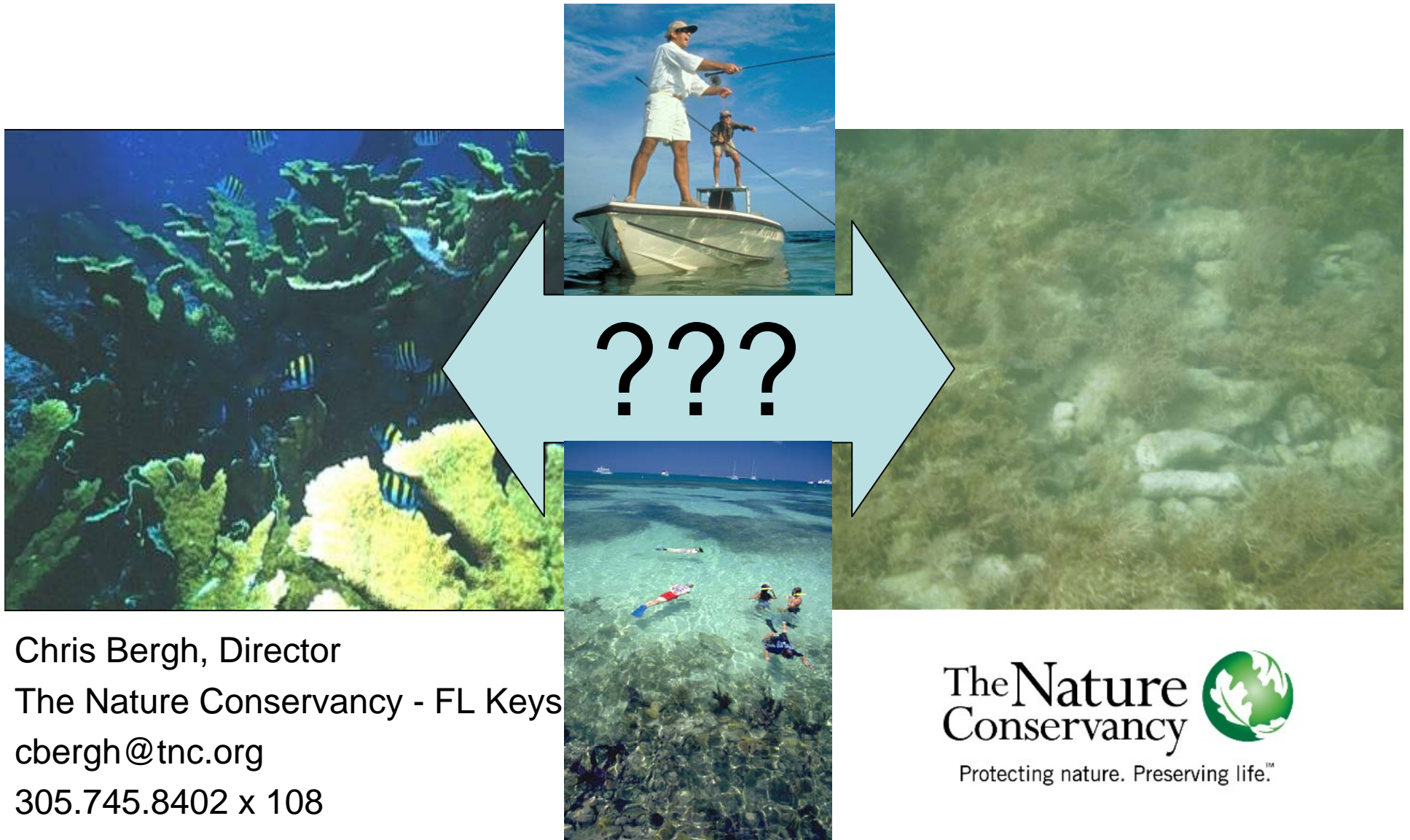
# Steering

- Many, many calls and several meetings
- Calls with GBRMPA's CC Group
- Defining resilience in the FRRP context
- Setting FRRP goals and objectives
- Developing project ideas, review of progress and ongoing guidance

# FRRP Projects



# Introduction to the Florida Reef Resilience Program



Chris Bergh, Director  
The Nature Conservancy - FL Keys  
cbergh@tnc.org  
305.745.8402 x 108

The Nature  
Conservancy   
Protecting nature. Preserving life.™